



Created By

Batchman

"BUNSEN IS A BEAST"

Show Bible



THE SHOW!

"BUNSEN IS A BEAST" centers around a little monster (beast) named BUNSEN. He's the first beast ever to attend a school for human kids. There's a lot of pressure on Bunsen to succeed and to prove to people that monsters can live among humans without eating them or laying eggs in their chest that explode when they hatch. If Bunsen blows it, the rift between monsters and people will widen, and they will probably never be invited to each other's holiday parties. But rather than living in fear of failure, Bunsen burns with optimistic enthusiasm and is determined to succeed at all costs!

On his first day of school, Bunsen bonds with MIKEY MUNROE, a sweet, super-quirky kid who accepts everyone and offers to show Bunsen the ropes. Bunsen and Mikey quickly develop a bro-mance that becomes the core and heart of the series.

Bunsen is like a kid in a candy store in his new, human world. But he's also a "beast out of water" and Mikey needs to give him the deets on most everything you and I take for granted. By the same token, Mikey is a stranger to "everything monster" and soon discovers that Bunsen's "beast" world is as fun and cool to him as *his* world is to Bunsen.

Together Bunsen and Mikey experience relentless fun and adventure. But there are forces in both worlds that have it in for them and will try and tear them down and even apart! No matter the odds, the heartfelt, comically symbiotic friendship between our heroes always triumphs in the end.



MAIN CHARACTERS

BUNSEN!



BUNSEN is totally amped about succeeding as the first 'beast ambassador' of good will. But he doesn't have a clue as to how our world works, so to keep himself on track, he takes notes on what's 'okay' and 'not okay' behavior.

(For example, in the pilot, he notes that pouring food into the "whirring mouth spout" in the top of his head freaks kids out.) Bunsen doesn't dwell on his mistakes. Instead, he moves on optimistically to make more and more mistakes - learning along the way.

Bunsen's will to succeed is only exceeded by his unbounded curiosity. For Bunsen, every morning in the human world, is like Christmas morning. And Christmas morning is even better!



Because everything in our world is new and exciting to Bunsen (from the ice cream truck to summer vacations) he's acts like a big puppy (actually breaking stuff with his wagging his tail) as he bounds through life! Bunsen isn't A.D.D., but he gets distracted by new things. He and Mikey could be in the middle of a crisis - but if Bunsen discovers the toilet for the first time he's gonna flush it and squeal with excitement - over and over...and over...and over...obsessively.

Bunsen also constantly mistakes remote controls for candy and eats them. As a result, whenever he sneezes or burps, automatic garage doors TVs and other appliances switch on an off all over the neighborhood.

Bunsen is super sweet to the point of being naïve. He treats everyone and everything with equal respect. Being from a whole different world, he's sees no hierarchical distinction between people and animals. If he has a party, he'll invite his human friends and a bear.

Because Bunsen has no practical experience as to how our world works, he can be gullible. The villains in the show try to use this against Bunsen - but his good karma tends to cause any attempt to cause him harm to backfire on the perpetrator; painfully, again and again.

BUNSEN'S BEASTLY ABILITIES!



Bunsen's beast DNA gives him weird "transformative" powers. If he eats a ton of fondue (and he will dip anything into a pot of melted cheese) he might slowly become Swiss and will be drawn to mountain climbing, yodeling and playing the Alpenhorn. If he's stung by a bee, he may become bee-like - wearing only black and yellow and coating the walls of his room with honey.

He can eat things through the top of his head and drink things through his tail like a straw. He can glow in the dark and flatten like a pancake. In short: he can do anything we need him to do. He is a fantastical, beastly buddy to Mikey.

One of Bunsen's weaknesses is beets. Yes, beets. The red, dirty vegetable that no sane kid likes. If Bunsen eats them he will be turned into a *GIANT, SCARY MONSTER!* Should this awkward situation ever occur, there is only one known cure to turn Bunsen back to normal: *BEAST YEAST*. It's a comical concoction that only Bunsen's monster *MOM* knows how to make.

His other weaknesses are his gullibility and his sometimes misguided belief that everyone is essentially good. That said, Bunsen will have weird "Beast" reactions to lots of things that don't effect human kids too badly. For example: toilet paper. It kinda freaks him out. Just a little.

MIKEY MUNROE!---TEMP ART



Mikey is the product of loving, comically over-protective parents. Because his mom and dad own a home security company, Mikey lives in a suburban "safe house" with more high tech gadgetry than NORAD. Even when Mikey leaves home, his parents sometimes track him for safety with a drone. To be clear, Mikey's parents are not controlling - they're just ridiculously over invested in his safety. Most of all, they're big, big fans of Mikey.

As a result (without ever being cocky) Mikey is a fan of Mikey. He likes and accepts himself, and as a result, he likes accepts all kinds of other people too.

Mikey has no desire to fit into any particular clique, which is probably why he's so relaxed about becoming best friends with a beast. Mikey is a jack of all trades and master of none. Which is okay cuz who needs to be master of anything in 5th grade?

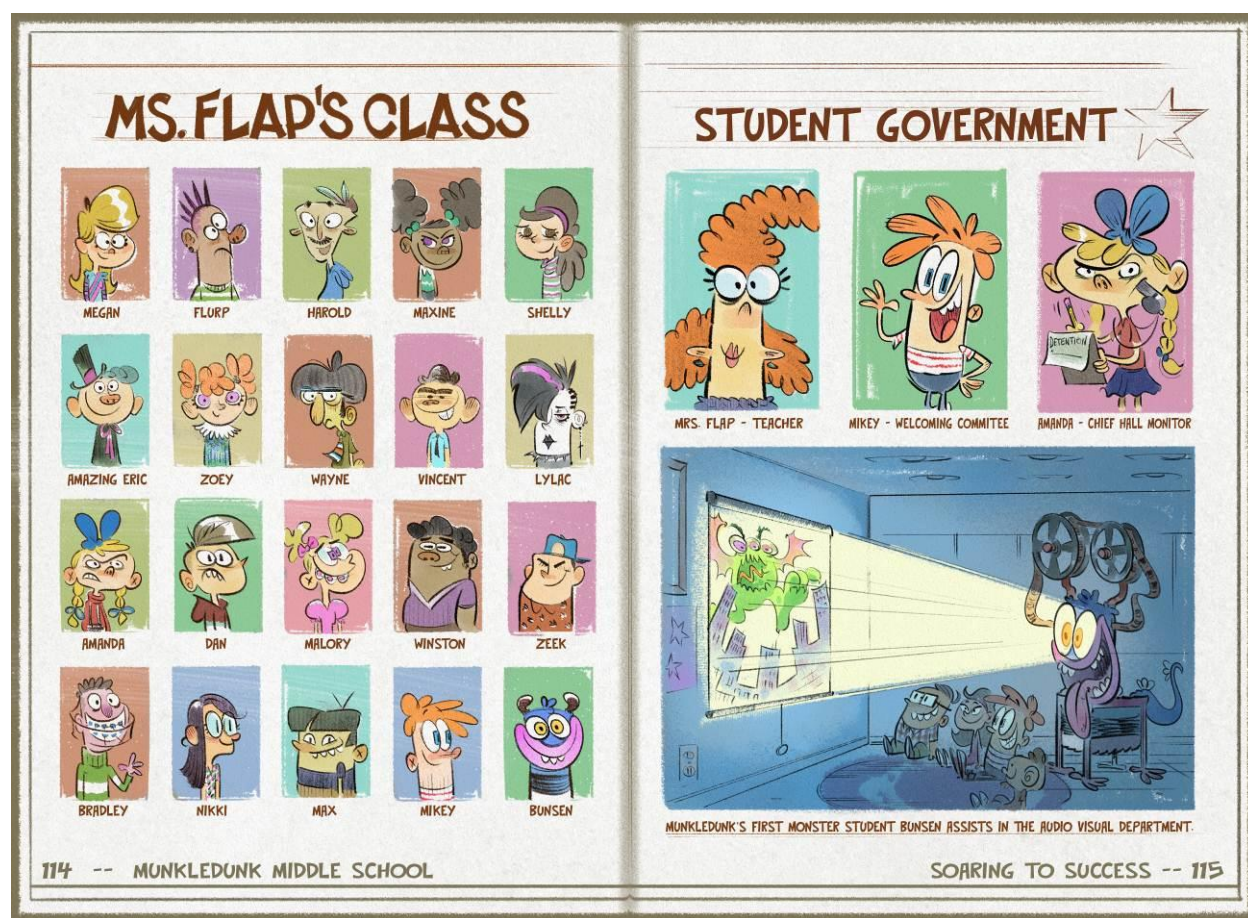


Mikey is in what you might call a "lifelong experimentation phase". He's played every sport, including a brief stint on the girls' lacrosse team. (Before they threw him off the squad. His teammates thought Mikey was just a weird girl who preferred to use the boy's locker room). Mikey's in every club at school, including: Bee Keepers Club, Zombie Apocalypse Survival Club, Disco Club, Math For People Who Hate Math Club, Historical Reenactment Club, Time Travel Club (which takes up no time because all the meetings are in the past) - and finally "The Sticking it to The Man Club".



MIKEY'S BUDDIES

Mikey's friends are as diverse as his interests. One friend, "Buzz", only wears a bee keepers outfit; another "Joseph" (from the Famous Dictators Club) dresses as a different maniacal ancient conqueror every day; and another (from the Future Business Leaders Club) only wears suits and goes by the name "Mr. Chalmers." Another friend "Lizzie" (a girl from the Ghost Hunters Club) constantly mistakes living people for ghosts and tries to trap them in a containment unit.



MIKEY & BUNSEN

Mikey's many interests help expose Bunsen to an endless variety of stuff. That said, Mickey knows just enough about everything to be dangerous. And when it comes to rocket science or snake charming that can be bad. But because Bunsen knows almost nothing about anything - Mikey seems like a wizard by comparison. And even though Mikey screws up and puts him and Bunsen in danger - Bunsen continues to look up to Mikey and treat him like a genius. For his part, Mikey never gets down on himself either and generally sees his efforts as kind of awesome.



No matter how much danger Mikey and Bunsen are in, they never have "freak out" moments of weeping and neurosis. During a crisis, they tend to remain pretty calm and positive - complimenting each other on a good effort even as they fail miserably. But, just after the danger has past, they have little "backlash" adrenaline rushes, during which they scream repeatedly.

Mikey's varied interests and endeavors are baby steps into the world of adventure compared to what he'll experience in his relationship with Bunsen. Before Bunsen, he existed on the edge of excitement. But Bunsen is so out of the box, that just by being his friend, Mikey is thrust into over-the-top fun.

AMANDA KILLMAN



She's the show's main villain. She is very much, in every way, Mikey's opposite. Whereas Mikey is easy going and accepting, Amanda is a rigid, rule bound, judgey neurotic. Amanda HATES BEASTS and she has made it her singular mission to prove that Bunsen is evil and to drive him from our world.

Amanda has no personal boundaries. She's a "close talker" who gets in your face and rants while lisping and spitting through her braces. Her spitting problem is accented by the fact that she speaks mostly in words that contain multiple "s" sounds. Amanda is super sneaky and has a cartoony knack for popping up out of the blue in places that would be difficult for a normal human to access: the jock bin in the boy's locker room, running dishwashers, Mikey's freezer etc.



ALL ABOUT AMANDA!

As the local rich kid (with a mom who's president of the local housing association), Amanda has a comically overinflated sense of her own importance as well as her mission to rid the world of Bunsen. Whenever she thinks she has some dirt on Bunsen, she skips over the principal and goes directly to the GENERAL at the nearby military base.

The only thing that's healthy about Amanda is that she's a total horndog. The only thing that seems to make her genuinely happy is suddenly discovering she's in the boy's locker room or in a tank full of soldiers.

Amanda's ACHILLES HEEL is that animals hate her because they sense her evil. Even butterflies attack her. Amanda's own cat, PRINCESS PUFF, lunges at her whenever they make eye contact. Mikey knows Amanda's weakness and uses it against her. For example: if she's chasing Mikey and Bunsen, they will run through a gopher field or a pet store causing her to get attacked! Over time we might find that anything that's totally pure and good hates Amanda. On a similar note: toddlers and babies have an innate dislike for Amanda and often attack her.

Amanda has a sinister mind and knows that Mikey has a crush on a girl named SOPHIE SANDERS. Whenever Sophie is around, Mikey slurs, mumbles and becomes completely and totally uncoordinated - tripping over his own feet, walking into doors etc. Amanda knows that Sophie is Mikey's Achilles heel and sometimes uses her presence to "disarm" Mikey, leaving Bunsen briefly vulnerable.

YAY! MORE CHARACTERS!

THE GENERAL



Enjoys alone time with his eagle, FREEDOM - always lets out a girly shriek when Amanda pops up in his hot tub or inches from his face in a secret bunker located miles beneath the earth's surface.



DARCY--TEMP ART

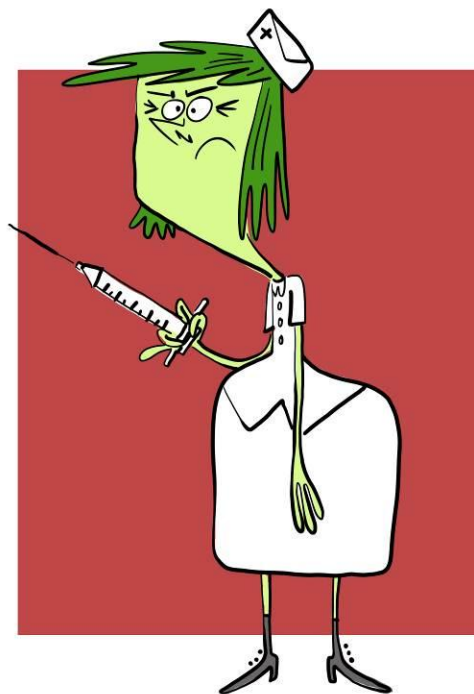
She's Mikey and Bunsen's homeschooled friend. Homeschooling has made Darcy awesomely quirky, interesting, and knowledgeable about seemingly even the most arcane subjects. Because, Darcy often has the info they need to get out of jams, Mikey and Bunsen often call on her for assistance. Turns out, she's really easy to find. That's because her homeschooling lifestyle has left her comically starved for socialization. As a result, Darcy pops up everywhere that Bunsen and Mikey happen to be. Moreover she's always at school events, including daily recess, picture day, and band practice (where she serves as the unsanctioned tuba soloist).



NURSE TWEAK

She's the nasty school nurse who won't ever give anyone a pass to get out of gym...even if they've been bitten by a cobra.

Except for Mikey. Turns out Nurse Tweak is so freaked out by Bunsen's beast physiology (including his head spout and four stomachs) that the mere sight of him in her office reduces her to screaming fits. If Mikey wants a pass to get out of gym - to leave the school grounds - even if he wants to borrow twenty bucks, all he has to do is bring Bunsen into Nurse Tweak's office and she'll give him anything - just to get rid of Bunsen. Bunsen, being sweet by nature never realizes that Mikey is using him to freak out the nurse; he's just excited to show Nurse Tweak how beasts work.



THE GOTH KIDS

The Goth kids shun everyone in school; except Bunsen who they worship like as idol. They're into the whole monster thing and Bunsen is the real deal.



SOPHIE SANDERS

Mikey's secret crush. When he's around her, he turns into a total spaz. Sophie is just a nice, albeit superficial girl whose only real goal is to become Miss North America.



MRS. FLAP



She's Mikey and Bunsen's teacher. When the series begins, Mrs. Flap seems pretty normal. But as is the case with most teachers (especially one with a beast in her class) she goes progressively bonkers. (But in a fun way.) For instance, Mrs. Flap tries to rationalize having a Kodiak bear in the class as part of an acceptance and diversity project. In another episode, she teaches the class while hanging upside down, to give herself a new perspective on teaching. Of course, she quickly blacks out.

As time goes on, Mikey and Bunsen notice more and more eccentricities in Mrs. Flap. She's sometimes dropped off at school by bikers, and other times by a Blackhawk helicopter. She also moonlights as a storm chaser and a semi-professional magician; and she's a nationally ranked curler. Sometimes Mikey and Bunsen notice Mrs. Flap speaking into her phone in indistinguishable languages (one of which involves clicking and popping sounds.) Mrs. Flap will remain a comic mystery for most of the series but will always be good for a laugh.



BUNSEN'S HOUSE



BUNSEN'S HOUSE is an actual character because it's a living beast that protects the family and comically abuses anyone who wants to hurt Mikey or Bunsen. It has a personality of its own. So, in theory, it could be in a bad mood, get the hiccups... *anything*. Whereas Mikey's house is like a super restrictive "panic room", Bunsen's house is a maze of crazy rooms and portals populated by octopus beasts who play ping pong, grandfather clocks who are actual grandfathers and a big invisible dog-like beast that bounds around and licks everyone with its invisible tongue. The house also has a portal through which Mikey and Bunsen can transport themselves to Beast World. Overall, the house can be "funny scary" at times - but it's much more important that it's "funny fun."



BUNSEN'S MOM AND DAD

They're fantasy parents for Mikey to hang out with because they are both total nut jobs. Mom is a practical joker and Dad is total loose cannon. Hanging out with Bunsen's parents is like hanging with big kids who have cars and a ton of credit cards. At Bunsen's house, there are no limits and no rules. When Bunsen and Mikey have a sleepover - Bunsen's parents encourage the boys to stay up later and eat more ice cream. In front of human adults, Bunsen's mom and dad "play the game" of pretending to take people seriously but under the surface they're totally irreverent and silly.

But in a way, Bunsen's family is an ironically a super high functioning model of psychological health. Much like the original "Adams Family" Mr. and Mrs. Bunsen are head over heels for each other (in a silly middle school crush kind of way) and both parents love Bunsen and totally accept all of his quirks.





BUNSEN'S BEAST FAMILY

Bunsen has a huge extended family - and now that he lives in the human world, Beastly relatives are always coming to visit. There's GRANDMA PEEPERS who has a million eyes. COUSIN QUILLIAM whose entire body is covered in quills. And UNCLE MUNCH, who eats a snack food called "Kids" - which unnerves Mikey a little at first.

Bunsen has a huge invisible (presumably dog-like) pet named RAYMOND. Raymond loves guests and tackles and licks anyone who enters the house. You can hear Raymond coming from the thunder of his paws on the floor - but you can't see him till it's too late.

BEAST VILLAINS

Over time we'll meet various Beasts Villains who are as dead set on bringing down Mikey as Amanda is on bringing down Bunsen. One such beast villain is THE LUNCH LADY: a beast villain who wants to capture Mikey and add him to his collection of people. So far, The Lunch Lady has collected exactly no people. The Lunch lady is actually a monstrous looking male beast who often disguises himself as the school lunch lady to capture Mikey. His disguise is comically terrible and it's obvious he's a monster.



EPISODE IDEAS / STORY AREAS – NOT FINAL

"BODY AND THE BEAST"

It's Bunsen's first school picture day and he's excited beyond belief. Mikey's not quite as excited because his school picture always turns out terrible. (He blinks, he's attacked by animals, etc.) When Amanda pulls up in a limousine (looking fabulous with her glam squad, complete with a red carpet and kid paparazzi) she splashes water on Bunsen. He pulls out a blow dryer to fix his hair for his picture, but accidentally blows his own head off. (It happens with beasts.) While Mikey stares wide-eyed, Bunsen's body gets on a city bus and leaves. With the help of their eccentric, home-schooled friend, Darcy - Bunsen's head and Mikey must track down Bunsen's body before they miss picture day! The stakes get raised when Bunsen's head tells Mikey if they don't get his head on his body by a certain time, his body will sprout a new, *evil* head! Agh! Mikey eventually re-attaches Bunsen's head in time and picture day turns out A-Okay! (Except for Mikey, who once again takes a terrible picture.)

"ICE SCREAMS"

When Bunsen learns about the mystical, human vehicle called "the ice cream truck", he becomes obsessed. Whenever he hears the ice cream truck song, he can't control himself and chases down the truck. Bunsen even gets "two strikes" in school for leaving school grounds to chase the truck. Mrs. Flap tells him if he gets one more strike he'll be expelled. This would be devastating for Bunsen because of his quest to prove monsters can behave in a school for human kids! Mikey vows to help Bunsen overcome his ice cream truck obsession by any means possible: aversion therapy, hypnotism, squirting him with water from a spritzer bottle like a cat, even trying to tell Bunsen that frozen yogurt is just as good. (It's not.) In a desperate attempt to get Bunsen expelled, Amanda hires an all-bell band to play the ice cream truck song off school grounds and ultimately arranges an international ice cream truck parade. Bunsen once again loses control! And after trying everything he can to stop Bunsen from chasing the ice cream trucks off school grounds, Mikey finally makes Bunsen realize that if he gets expelled they can no longer hang out. Turns out, the potential loss of his friendship with Mikey is the deterrent strong enough to help Bunsen control himself. All is well until Bunsen discovers the town's taco truck.

"HOUSE HUNTER!"

Mikey hangs out at Bunsen's house for the first time. As Mikey approaches the house (which is a living creature), it smiles and opens the door. Mikey thinks Bunsen's house is awesome! There's an armoire of arms that initiates a complicated handshake with Mikey! There's even a "heavy metal" rocking chair that rocks out! Bunsen says the house loves Mikey because it's a great judge of character. Outside, Amanda wears a beast costume in order to gain access to Bunsen's house and discover his weaknesses so she can destroy him. She pretends to be Bunsen's long lost beast friend, Cecilia Summersaults. (A choice of names that only accentuates her penchant for spitting when she says "s" words.) Bunsen doesn't remember knowing anyone named Cecilia, but remains polite and invites Mikey and "Cecilia" up to hang. Unbeknownst to Mikey and Bunsen, a large cuckoo clock with a vulture pops out and snatches "Cecilia," yanking her into the clock. When the boys notice she's gone, they assume she wants to play hide-and-seek. They look for "Cecilia," but get distracted by all the

cool stuff in the house, like a giant invisible dog that likes to play fetch. Meanwhile, the boys are unaware as the house comically attacks "Cecilia." (E.g., she's repeatedly smacked by a Ping-Pongapus -- an octopus who loves to play ping pong.) Eventually, Mikey and Bunsen find "Cecilia" cornered by a snapping toilet and realize the house is being mean to her. Bunsen scolds his house. Just then, the toilet unmasks "Cecilia"/Amanda! Amanda holds up her phone. She's recorded everything, and now people will see beasts shouldn't live with humans! Just then, the invisible dog swallows the phone and chases Amanda off.

"SNOT MY FAULT"

Amanda knocks on Bunsen's door and threatens to get Bunsen and his family kicked out of the neighborhood because their house violates endless neighborhood codes. Then, unbeknownst to Amanda, Bunsen's house (which is a living creature) sneezes, blasting "Sneeze Beasts" (crazy, little, green snot creatures) onto Amanda's bejeweled Segway. Amanda unknowingly brings the sneeze beasts back to her immaculate house. The sneeze beasts quickly multiply and infest the house, causing chaos! Because Amanda's mom has arranged a photo shoot later that day with Muckledunk Manors with Manners magazine, Amanda is forced to call Bunsen and Mikey to "ghost bust" her house. In trying to eliminate the sneeze beasts, Mikey and Bunsen unwittingly destroy Amanda's house! Eventually Mikey and Bunsen realize the only thing that will stop the beasts is Amanda's pimple cream. Mikey and Bunsen leave as heroes. Amanda's mom returns with the photographer from the magazine, shocked to find the house in ruins. And, since she has no more pimple cream, Amanda now has to pose for a picture with horrible acne.

